

Kent Against Live Exports (KALE)



Export Ship 'Joline' Loaded With Livestock Transporters and Sailing From Ramsgate – 27-29 July 2011.
Photo Credits: V. C. - KALE.

4th August 2011

The following photographs were obtained by the KALE official photographer at Ramsgate harbour, Kent, on the sailings during period 27th-29th July 2011.

KALE reports associated with these sailings were provided at the time.

Photographs show live animals, mainly calves, but some sheep, being exported from the port to the French port of Calais, for onward movement to final destinations within the EU, such as further fattening facilities in Spain.

The photographs show the vessel M.V. "JOLINE", which we are informed was an ex Soviet battle tank carrier, and which is now the only vessel being operated for (non-breeding stock) animal export services from Uk ports to those of mainland Europe.

The 'Joline' is a very small Ro-Ro type vessel, maximum capacity of 6 livestock transporters. She sails under a Latvian flag .

A new petition relating to live animal exports from within the EU to Turkey, can be viewed and signed via the following link:

<http://www.thepetitionsite.com/2/Urge-the-European-Commission-to-suspend-the-export-of-animals-to-Turkey/>

Please give your support to this important petition.
Thanks and Regards – KALE.

Sheet 1

BAN LIVE ANIMAL EXPORTS

Kent Against Live Exports (KALE).

All rights reserved. No part of this publication, including any photographs, may be reproduced for commercial purposes using any means whatsoever, without prior written permission from KALE.
Contact – Mark Johnson – EU Correspondent and Press / Media; or Valerie Cameron – Official KALE Photographer.



Sheet 2

BAN LIVE ANIMAL EXPORTS

Kent Against Live Exports (KALE).

All rights reserved. No part of this publication, including any photographs, may be reproduced for commercial purposes using any means whatsoever, without prior written permission from KALE.
Contact – Mark Johnson – EU Correspondent and Press / Media; or Valerie Cameron – Official KALE Photographer.



Sheet 3

BAN LIVE ANIMAL EXPORTS

Kent Against Live Exports (KALE).

All rights reserved. No part of this publication, including any photographs, may be reproduced for commercial purposes using any means whatsoever, without prior written permission from KALE.

Contact – Mark Johnson – EU Correspondent and Press / Media; or Valerie Cameron – Official KALE Photographer.



Sheet 4

BAN LIVE ANIMAL EXPORTS

Kent Against Live Exports (KALE).

All rights reserved. No part of this publication, including any photographs, may be reproduced for commercial purposes using any means whatsoever, without prior written permission from KALE.
Contact – Mark Johnson – EU Correspondent and Press / Media; or Valerie Cameron – Official KALE Photographer.



Sheet 5

BAN LIVE ANIMAL EXPORTS

Kent Against Live Exports (KALE).

All rights reserved. No part of this publication, including any photographs, may be reproduced for commercial purposes using any means whatsoever, without prior written permission from KALE.

Contact – Mark Johnson – EU Correspondent and Press / Media; or Valerie Cameron – Official KALE Photographer.



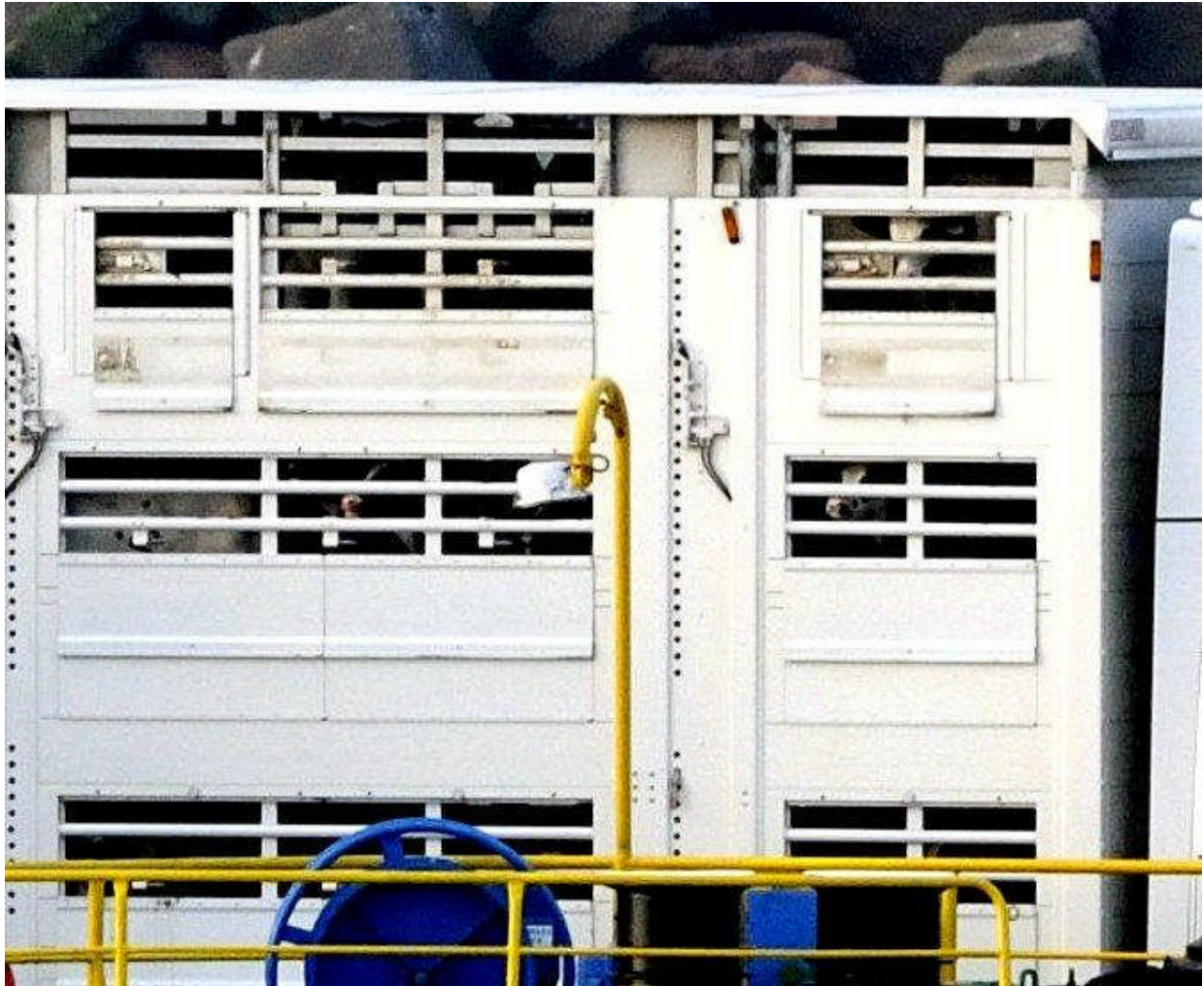
Sheet 6

BAN LIVE ANIMAL EXPORTS

Kent Against Live Exports (KALE).

All rights reserved. No part of this publication, including any photographs, may be reproduced for commercial purposes using any means whatsoever, without prior written permission from KALE.

Contact – Mark Johnson – EU Correspondent and Press / Media; or Valerie Cameron – Official KALE Photographer.



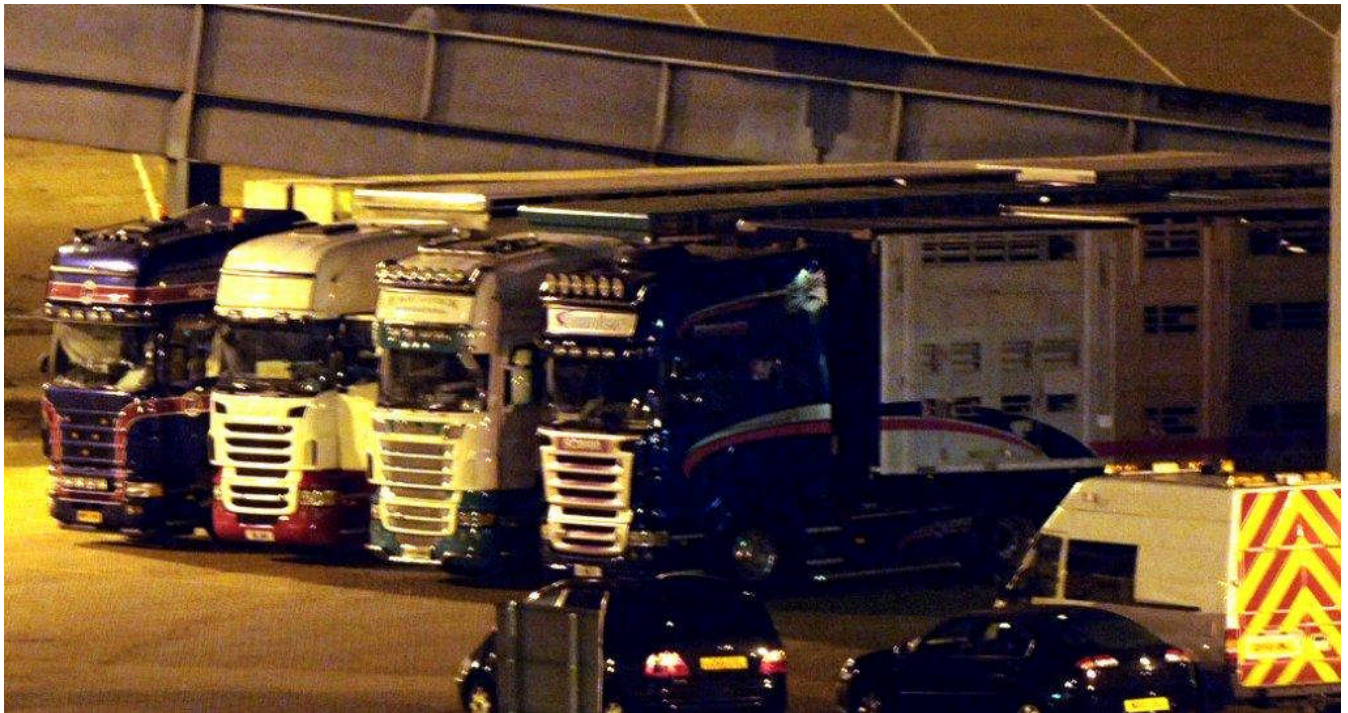
Sheet 7

BAN LIVE ANIMAL EXPORTS

Kent Against Live Exports (KALE).

All rights reserved. No part of this publication, including any photographs, may be reproduced for commercial purposes using any means whatsoever, without prior written permission from KALE.

Contact – Mark Johnson – EU Correspondent and Press / Media; or Valerie Cameron – Official KALE Photographer.



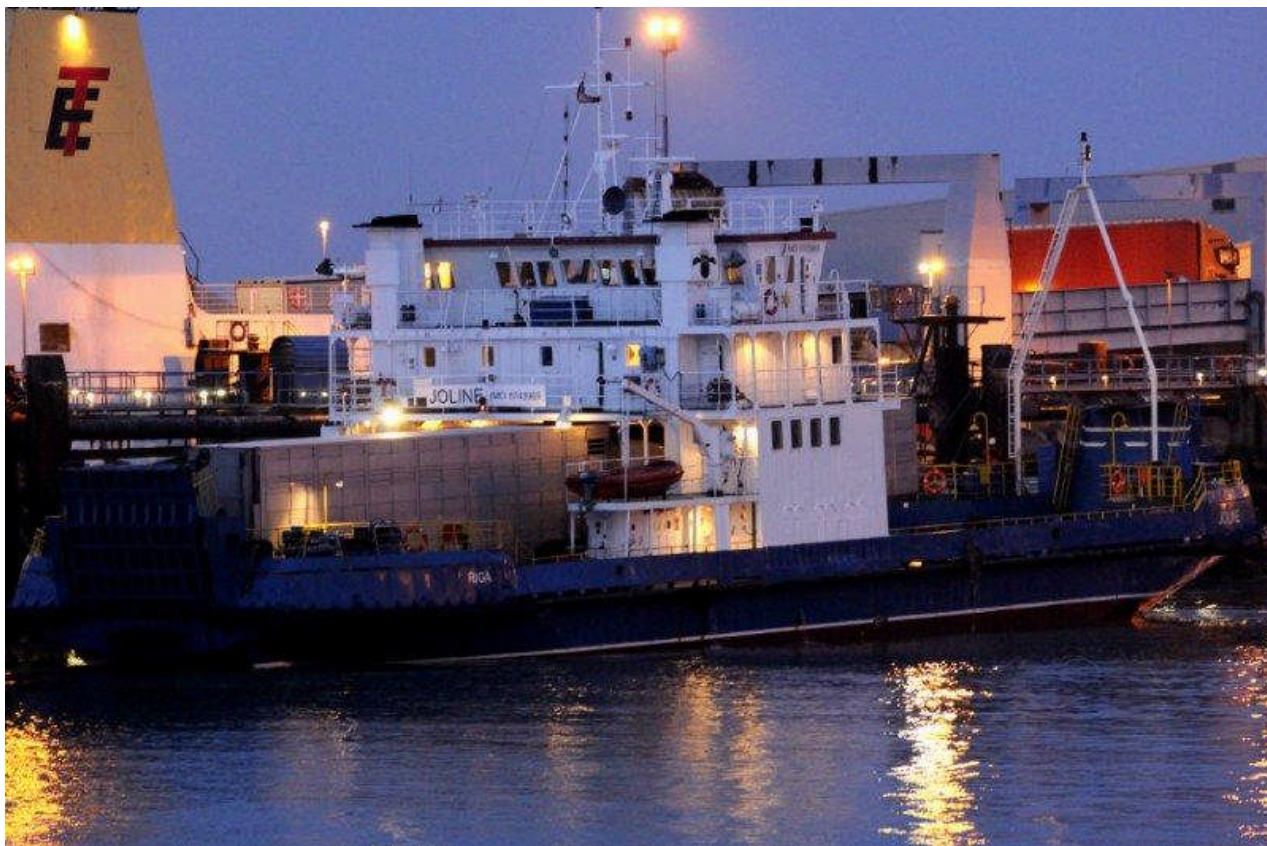
Sheet 8

BAN LIVE ANIMAL EXPORTS

Kent Against Live Exports (KALE).

All rights reserved. No part of this publication, including any photographs, may be reproduced for commercial purposes using any means whatsoever, without prior written permission from KALE.

Contact – Mark Johnson – EU Correspondent and Press / Media; or Valerie Cameron – Official KALE Photographer.



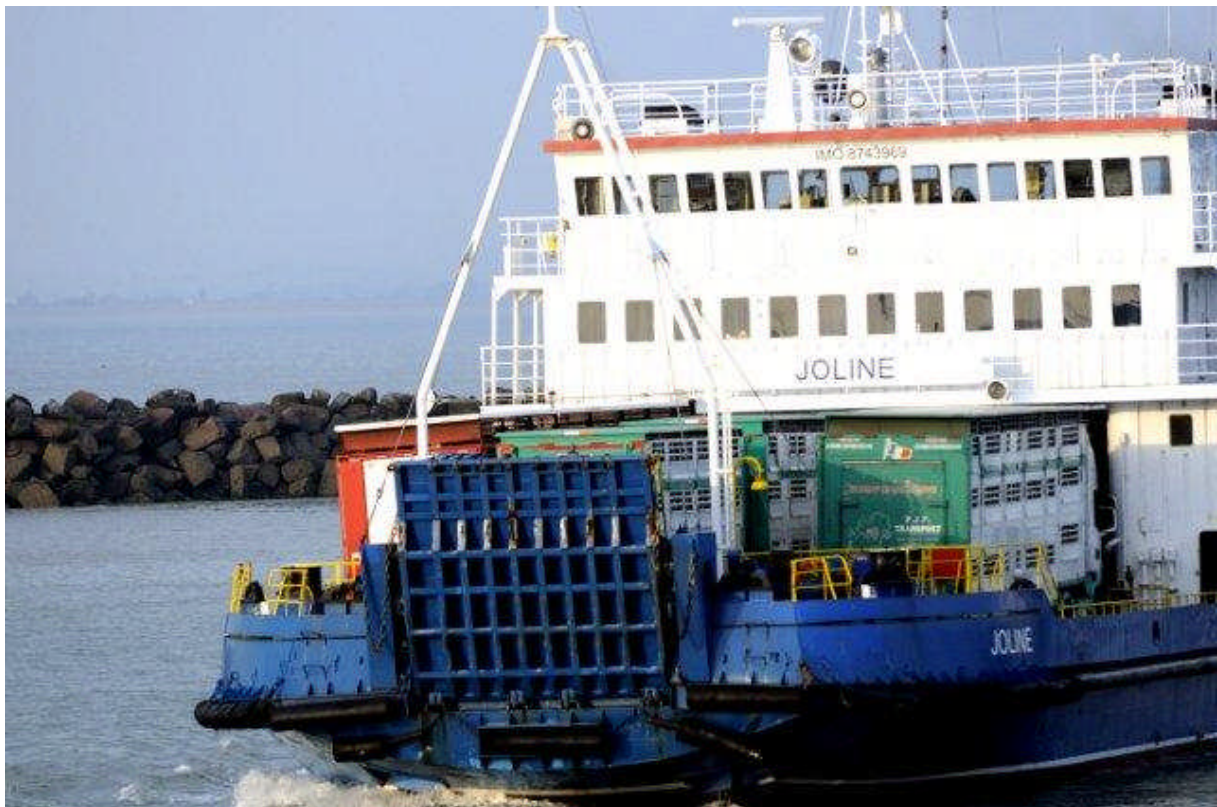
Sheet 9

BAN LIVE ANIMAL EXPORTS

Kent Against Live Exports (KALE).

All rights reserved. No part of this publication, including any photographs, may be reproduced for commercial purposes using any means whatsoever, without prior written permission from KALE.

Contact – Mark Johnson – EU Correspondent and Press / Media; or Valerie Cameron – Official KALE Photographer.



BAN LIVE ANIMAL EXPORTS

Kent Against Live Exports (KALE).

All rights reserved. No part of this publication, including any photographs, may be reproduced for commercial purposes using any means whatsoever, without prior written permission from KALE.

Contact – Mark Johnson – EU Correspondent and Press / Media; or Valerie Cameron – Official KALE Photographer.



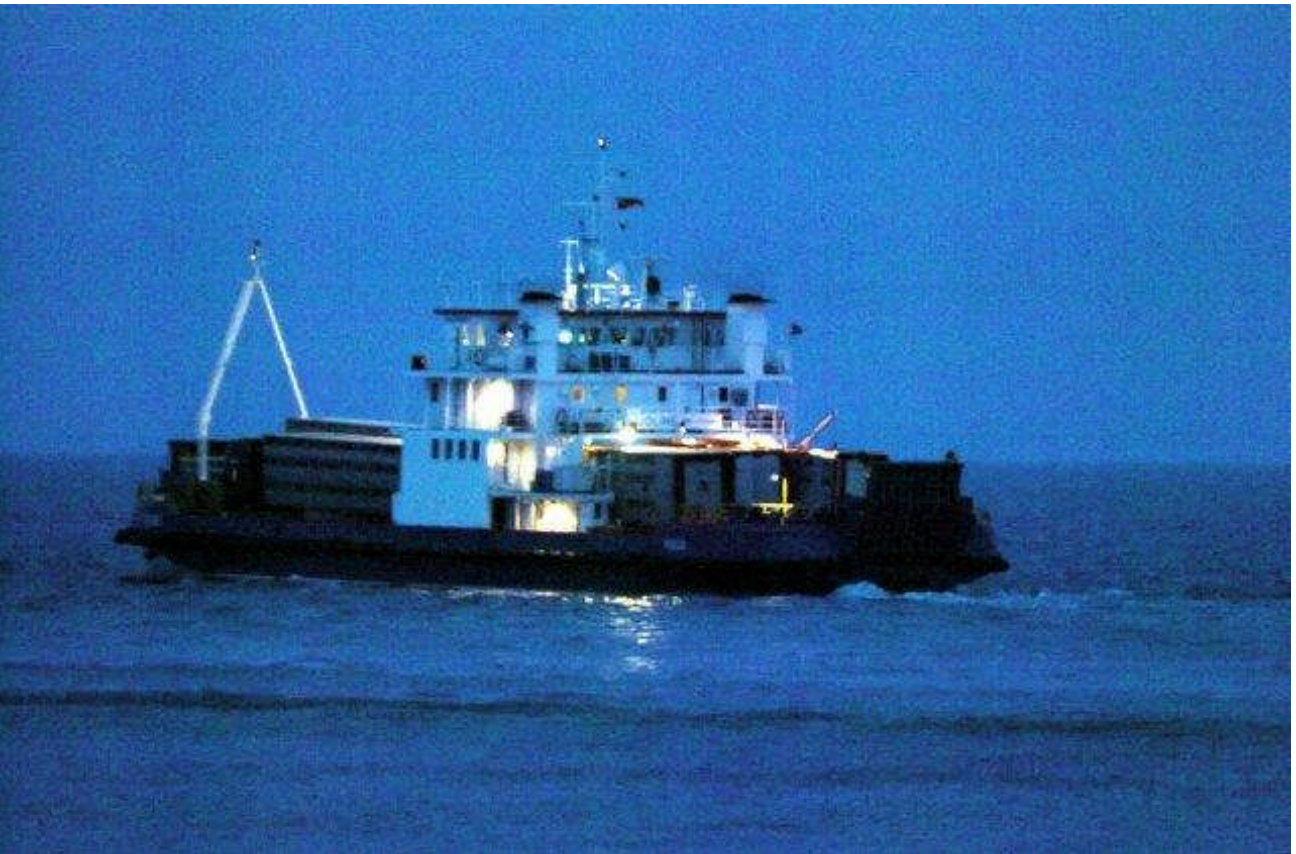
Sheet 11

BAN LIVE ANIMAL EXPORTS

Kent Against Live Exports (KALE).

All rights reserved. No part of this publication, including any photographs, may be reproduced for commercial purposes using any means whatsoever, without prior written permission from KALE.

Contact – Mark Johnson – EU Correspondent and Press / Media; or Valerie Cameron – Official KALE Photographer.



Sheet 12

BAN LIVE ANIMAL EXPORTS

Kent Against Live Exports (KALE).

All rights reserved. No part of this publication, including any photographs, may be reproduced for commercial purposes using any means whatsoever, without prior written permission from KALE.

Contact – Mark Johnson – EU Correspondent and Press / Media; or Valerie Cameron – Official KALE Photographer.