

# ***Kent Against Live Exports (KALE)***



*A vehicle which meets EU standards ? – or simply Conservative Animal Health Standards - Photo Credit: V. Cameron.*

***Monday 12<sup>th</sup> September 2011***

***Important Note:***

***ALL of the photographs in this report were taken on, and are specific to, the Livestock shipment of Friday 9<sup>th</sup> September 2011.***

***Photo credits – all Valerie Cameron.***

***Note – the photos are NOT an optical illusion – it is Uk Animal Health's way of saying that everything is ok and conforms with EU standards for animals in transport (Regulation 1/2005 refers – please see below).***

***The following photographs are Additional photographs to support 'J24' KALE REPORT on the LIVESTOCK SHIPMENT on Friday 9<sup>th</sup> September 2011 from RAMSGATE, KENT U.K. to CALAIS FRANCE.***

*Sheet 1*

***BAN LIVE ANIMAL EXPORTS***

***Kent Against Live Exports (KALE).***

***All rights reserved. No part of this publication, including any photographs, may be reproduced for commercial purposes using any means whatsoever, without prior written permission from KALE.  
Contact – Mark Johnson – EU Correspondent and Press / Media; or Valerie Cameron – Official KALE Photographer.***

*It would appear that Uk 'Animal Health' – part of Defra and run by Conservative Party Ministers; are now more than happy to approve vehicles to continue their journeys at the very sub standards that can be seen in the photographs – roofs to trailers which are obviously not working (raising) correctly and are thus, in our opinion, well below EU standards.*

*Maybe when this vehicle was 'inspected' by Animal Health at Ramsgate and subsequently allowed to continue on its journey to Europe; complete with a bent roof and animals suffering within (sheep); Animal Health (operating out of Dover port) had to let the vehicle continue because animals cannot be taken to a facility within Kent and unloaded; maybe this is because we doubt that there still is anything which has been organised.*

*We have written to Spelman and Paice at Defra regarding an EU approved facility specifically within Kent county, to which export animals can be taken in the event of emergencies and bad weather delays.*

*Wonky trailer roofs and suffering animals which result are something which we consider to be an 'emergency'.*

*But is there a facility within Kent to which these animals can be taken when events like this happen ? – probably not; so Animal Health say all is ok and the animals continue on their journey.*

*Some 3.5 years after the EU FVO reported that a Kent emergency facility was very much required, we still think that Defra are ignoring the situation; hence our letter requesting confirmation of the current situation last week and hence our wait now for a formal response. All information including this report is being supplied to the EU Legal Affairs team and the FVO, as always.*

### **Additional information: EU Animal Transport Regulations.**

**EU Regulation 1/2005 (protection of animals during transport):**

**Article 18 – Certificate of approval and means of transport by road.**

**Para 1: The Competent Authority or body designated by a member state shall grant a certificate of approval for means of transport by road used for long journeys upon application, provided that the means of transport:**

**Sub Para (b): have been inspected by the competent authority ... and found to comply with the requirements of chapters II and IV of Annex I applicable to the design, the construction and the maintenance of means of transport by road used for long journeys.**

## **BAN LIVE ANIMAL EXPORTS**

**Kent Against Live Exports (KALE).**

**All rights reserved. No part of this publication, including any photographs, may be reproduced for commercial purposes using any means whatsoever, without prior written permission from KALE.  
Contact – Mark Johnson – EU Correspondent and Press / Media; or Valerie Cameron – Official KALE Photographer.**

**EU Regulation 1/2005 (protection of animals during transport):**

**Annex I – Technical Rules – Fitness for Transport**

**Para 1. No animal shall be transported unless it is fit for the intended journey, and all animals shall be transported in conditions guaranteed not to cause them injury or unnecessary suffering.**



**We say: EU Fitness for Transport rules obviously do not apply to sheep with trapped legs in Ramsgate using vehicles !!**

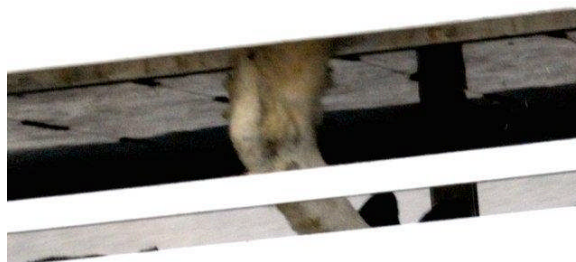
**EU Regulation 1/2005 (protection of animals during transport):**

**Chapter II – Means of Transport**

**1. Provisions for all means of transport.**

**1.1 means of transport, containers and their fittings shall be designed, constructed, maintained and operated so as to:**

**(a) avoid injury and suffering and to ensure the safety of the animals.**







Sheet 4

## **BAN LIVE ANIMAL EXPORTS**

*Kent Against Live Exports (KALE).*

*All rights reserved. No part of this publication, including any photographs, may be reproduced for commercial purposes using any means whatsoever, without prior written permission from KALE. Contact – Mark Johnson – EU Correspondent and Press / Media; or Valerie Cameron – Official KALE Photographer.*





**Vehicle at rear with twisted roof – to EU standards ? – we doubt it !**

Sheet 5

## **BAN LIVE ANIMAL EXPORTS**

**Kent Against Live Exports (KALE).**

**All rights reserved. No part of this publication, including any photographs, may be reproduced for commercial purposes using any means whatsoever, without prior written permission from KALE. Contact – Mark Johnson – EU Correspondent and Press / Media; or Valerie Cameron – Official KALE Photographer.**





**Waves at Sea – Waves in the roof – Approved by a Conservative Ministry  
and Approved by Uk Animal ‘Health’ ! ? !!!**

Sheet 6

## **BAN LIVE ANIMAL EXPORTS**

**Kent Against Live Exports (KALE).**

**All rights reserved. No part of this publication, including any photographs,  
may be reproduced for commercial purposes using any means whatsoever, without prior written permission from KALE.  
Contact – Mark Johnson – EU Correspondent and Press / Media; or Valerie Cameron – Official KALE Photographer.**





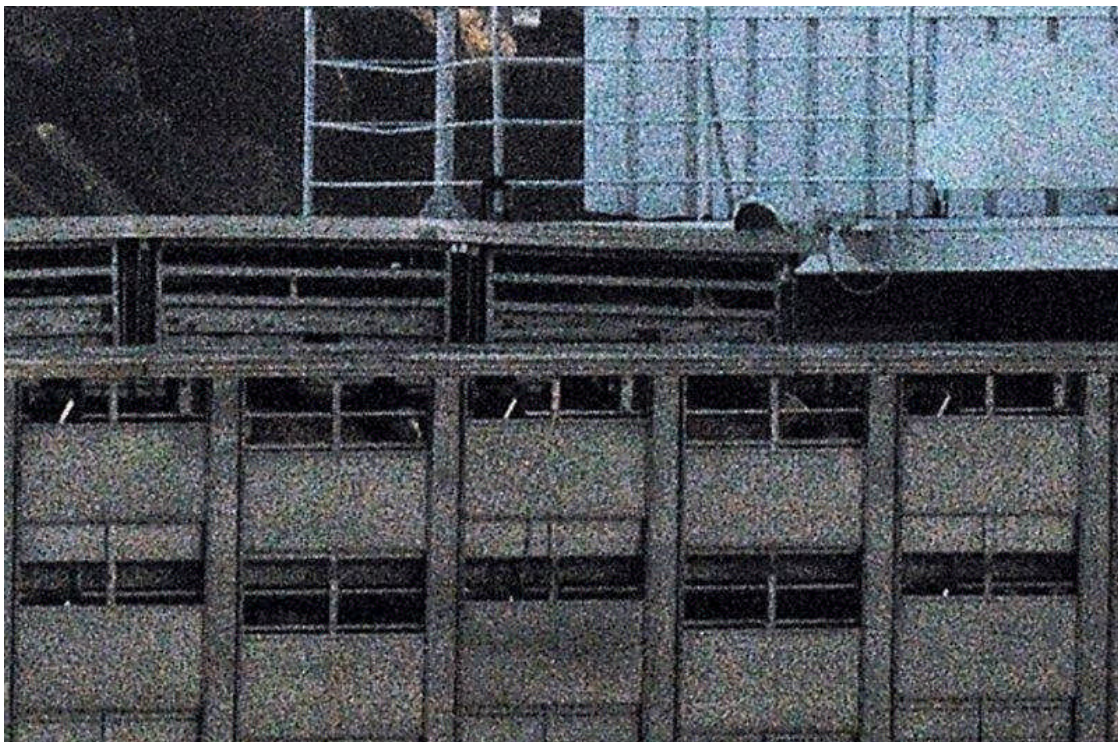
Sheet 7

## **BAN LIVE ANIMAL EXPORTS**

*Kent Against Live Exports (KALE).*

*All rights reserved. No part of this publication, including any photographs, may be reproduced for commercial purposes using any means whatsoever, without prior written permission from KALE. Contact – Mark Johnson – EU Correspondent and Press / Media; or Valerie Cameron – Official KALE Photographer.*





Sheet 8

### **BAN LIVE ANIMAL EXPORTS**

*Kent Against Live Exports (KALE).*

*All rights reserved. No part of this publication, including any photographs, may be reproduced for commercial purposes using any means whatsoever, without prior written permission from KALE.  
Contact – Mark Johnson – EU Correspondent and Press / Media; or Valerie Cameron – Official KALE Photographer.*