

*For the Dutch authorities*

## **Inspection with Polish authorities of a poultry truck with spent- laying hens from the Netherlands**



### **Summary:**

On April 20<sup>th</sup> Eyes on Animals and TSB|AWF was giving a practical-training course to the ITD (Polish road inspectors) and official veterinarians from the region of Poznan in Poland. An inspection-post was set up along the A2 highway and all livestock trucks passing were stopped and inspected by the teams of official inspectors (ITD and veterinarians) and the EonA and TSB|AWF trainers. A poultry truck owned by the Polish company Lech Drób was stopped and checked. On board were spent-laying hens from the Netherlands and they were heading for slaughter at the Lech Drób slaughterhouse in Zalewo (a journey of 16,5 hours). This poultry-truck had **three violations**. One was the overcrowding of the birds. Each crate had 17 birds in it when the maximum allowed according to the EU density chart would be 14 birds. The other violation was related to the watering system. Even though the truck was equipped with a »water-system«, the watering system was not working for two reasons: a) maintenance problems (leaking of water out of the system), leaving the birds behind the leakage without water supply; b) due to the density of the birds loaded, they could not move within the cage, and so were not able to reach the nipple anyway. Of additional concern was that we noticed quite a number of dead birds in the overcrowded containers that were within our view. The third violation was that there was no access to the birds and even no visual inspection possibility of the birds transported in the containers in the middle row.

**Violations occurring in The Netherlands with the farmer (keeper), chicken-catching crew and transporter accountable: EC 1/2005 Article 3, Article 6(3), Article 8(1) with specifications indicated in the Annex:**

1. Overcrowded: EC 1/2005 Annex 1 Chapter VII E
2. Water system: EC 1/2005 Annex 1 Chapter V Pt 2.1a
3. Lack of access and visual inspection possibility: EC 1/2005 Annex 1 Chapter II Pt 1.1f and EC 1/2005 Annex 1 Chapter I Pt. 4

*We would like to kindly ask the Dutch authorities from the NVWA to investigate this case further by checking on the farmer and catching crew involved in The Netherlands. Video footage of this transport inspection is available here: [https://youtu.be/U-cxGwY7S\\_o](https://youtu.be/U-cxGwY7S_o)*

## **Facts**

**Date:** 20.04.2016

**Location:** A2 highway near Poznan, Poland

**Team:** ITD and official veterinarians Poznan region. Training-team from Eyes on Animals and TSB|AWF assisted by Dr. Rabitsch, expert on livestock transport inspections and enforcement from Austria.

### **Vehicle:**

Poultry- truck owned by Zakład Drobiarski „Lech Drób” Sp. z o.o.;  
Registration number: NIL 28211,  
Make: Wielton.

### **Transported animals:**

Spent laying hens from the Netherlands to Lech Drób slaughterhouse in north-eastern Poland (14-230 Zalewo, ul. Tartaczna 20B).

Number of animals on board: 9 180.

Birds transported in 3 rows of containers; number of containers: 540; size of containers: 70x60=4200 cm<sup>2</sup>.

### **General observations:**

A generally modern truck with watering system for poultry. We could only see the watering system for external rows of cages, the drivers said there is a watering system for the middle row as well. Unfortunately, after asking the drivers to turn the water on, we saw that the watering system on the right side was leaking at about two thirds of the length of the truck, which means that birds in the back one third of the truck were transported without water supply. (see video footage).



Curtains: appropriate for poultry transport, installed and properly attached.

Drivers were rather well-informed, friendly, willing to cooperate.

Cages appeared overcrowded with birds. We see many dead ones. Water system leaking.

### **Technical conditions:**

- no access to the animals and no visual inspection possibilities of the birds in the middle row of containers.

- *leaking watering system* on the right side of the truck, meaning lack of water supply for the birds in the back of the truck. We could not inspect the watering system in the middle row of cages. (see video footage and photos on next page).

#### Loading conditions:

- *Fitness for transport:* many animals made a very poor impression. Numerous were observed already dead. (see video footage)
- *Density:* Unnecessary pain and suffering during the journey because of exceeded loading density. The birds had problems keeping their natural position because there were too many of them in one cage. (see video footage and photos below)

#### **Calculation:**

**Loading surface of cage: 4200 cm<sup>2</sup> (70cm x 60 cm)**

**Number of hens per cage: 17; average weight of birds: 1.8 kg (according to CMR)**

**According to EC 1/2005 density charts, the surface required for poultry over 1.6 kg is 160 cm<sup>2</sup>/kg of bodyweight. Accordingly, the allowed weight per cage should be 26.25 kg, while the loaded weight was 30.6 kg (17 birds x 1.8 kg). This means each cage was overloaded by 4.35 kg, an equivalent of 2.416 birds.**

- **DOA:** according to the slaughterhouse veterinarian at the destination, the total number of birds dead on arrival was 93 (over 1% of DOA's).



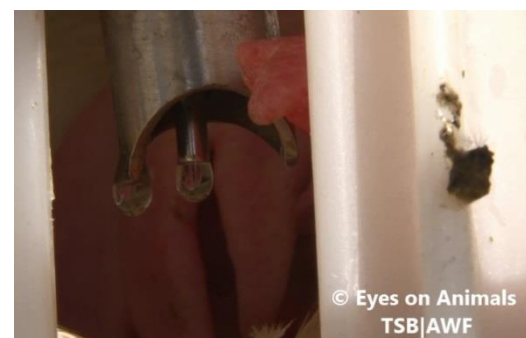
Dead birds



Dead spent laying-hen



Appropriate curtains in place



Leaking water system



## **Violations occurring in The Netherlands.**

**EC 1/2005 Article 3 – No person shall transport animals or cause animals to be transported in a way likely to cause injury or undue suffering to them. In addition a,b,c,e,f,h.**

**OVERCROWDED (Dutch farmer and catching-crew and transport company responsible)**

**EC 1/2005 Article 6(3) and Article 8(1)**

**Annex 1 Chapter VII E – 1 birds of 1,8kg should receive 160cm<sup>2</sup> of space per kg.**

*Beladingsdichtheid voor het vervoer van pluimvee in containers*

De minimumvloeroppervlaktes worden als volgt vastgesteld:

Categorie	Oppervlakte in cm <sup>2</sup>
Eendagskuikens	21-25 per kuiken
Pluimvee, behalve eendagskuikens: gewicht in kg	Oppervlakte in cm <sup>2</sup> per kg
< 1,6	180-200
1,6 tot < 3	160
3 tot < 5	115
> 5	105

Deze getallen kunnen variëren, afhankelijk niet alleen van het gewicht en de grootte van de dieren, maar ook van hun fysieke conditie, de weersomstandigheden en de vermoedelijke transporttijd.

**BROKEN AND INACCESSIBLE WATER SYSTEM FOR DRINKING ( transport company responsible)**

**EC 1/2005 Article 6 (3) Annex 1 Chapter V Pt 2.1a – for poultry, suitable food and water shall be available in adequate quantities, safe in the case for a journey lasting less than 12 hours disregarding loading and unloading time.**

**NO ACCESS FOR INSPECTION AND CARE – (transport company responsible)**

**EC 1/2005 Article 6(3) Annex 1 Chapter II Pt. 1.1f – means of containers and their fittings shall be designed, constructed, maintained and operated so as to: provide access to the animals to allow them to be inspected and cared for.**

**EC 1/2005 Article 6(3) Annex 1 Chapter I Pt. 4**

*When animals fall ill or are injured during transport, they shall be separated from the others and receive first-aid treatment as soon as possible. They shall be given appropriate veterinary treatment and if necessary undergo emergency slaughter or killing in a way which does not cause them any unnecessary suffering.*